



LG474112275

LABORATORY GROWN DIAMOND REPORT

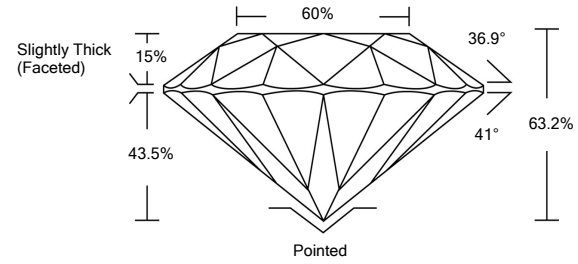
05/11/2021
IGI Report Number LG474112275
Shape and Cutting Style ROUND BRILLIANT
Measurements 9.05 - 9.10 x 5.74 mm

GRADING RESULTS
Carat Weight 3.01 CARATS
Color Grade J
Clarity Grade VS 2
Cut Grade VERY GOOD

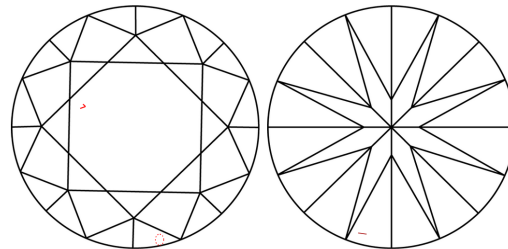
ADDITIONAL GRADING INFORMATION
Polish EXCELLENT
Symmetry EXCELLENT
Fluorescence NONE
Inscription(s) LABGROWN IGI LG474112275

Comments: This Laboratory Grown Diamond was created by Chemical Vapor Deposition (CVD) growth process and may include post-growth treatment. Type IIa

PROPORTIONS



CLARITY CHARACTERISTICS



KEY TO SYMBOLS

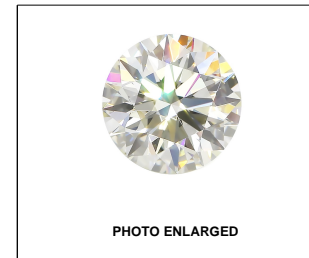
Red symbols indicate internal characteristics. Green symbols indicate external characteristics.

GRADING SCALES

Table with 5 columns for Color Grading Scale (CL to LT) and Clarity (10x) Grading Scale (FL to I).

The laboratory grown diamond described in this Report (Report) has been graded, tested, analyzed, examined and/or inscribed by International Gemological Institute (IGI). A laboratory grown diamond is one that has essentially the same chemical, physical and optical properties as a mined diamond...

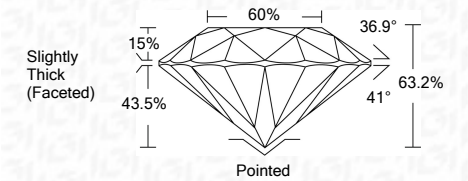
© INTERNATIONAL GEMOLOGICAL INSTITUTE, INC.



LABGROWN IGI LG474112275

LASERSCRIBE SM

05/11/2021
IGI Report Number LG474112275
Shape and Cutting Style ROUND BRILLIANT
Measurements 9.05 - 9.10 x 5.74 mm
GRADING RESULTS
Carat Weight 3.01 CARATS
Color Grade J
Clarity Grade VS 2
Cut Grade VERY GOOD



ADDITIONAL GRADING INFORMATION
Polish EXCELLENT
Symmetry EXCELLENT
Fluorescence NONE
Inscription(s) LABGROWN IGI LG474112275

Comments: This Laboratory Grown Diamond was created by Chemical Vapor Deposition (CVD) growth process and may include post-growth treatment. Type IIa



IGI

05/11/2021
IGI Report No. LG474112275
ROUND BRILLIANT
9.05 - 9.10 x 5.74 mm
Carat Weight 3.01 CARATS
Color Grade J
Clarity Grade VS 2
Cut Grade VERY GOOD
Depth 63.2%
Table 60%
Girdle Slightly Thick (Faceted)
Culet Pointed
Polish EXCELLENT
Symmetry EXCELLENT
Fluorescence NONE
Inscription(s) LABGROWN IGI LG474112275
Comments: This Laboratory Grown Diamond was created by Chemical Vapor Deposition (CVD) growth process and may include post-growth treatment. Type IIa