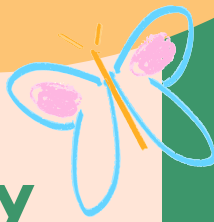


Our Philosophy



- We want to provide an enriched, loving environment where the children feel comfortable.
- We want to educate the whole child: physically, emotionally, intellectually, and socially, by providing the child with successful learning experiences in these areas.
- We want to ensure the child's future success in other learning situations by helping each child develop a positive attitude about himself/herself and about learning.



3 Reasons for considering LSLC



1. We love Christ and we love kids. Christianity is at the core of who we are and everything we do. We will remind your children daily that they are loved by you, loved by God, and loved by us.
2. Your baby and child can thrive in a place filled with love and developmentally appropriate activities that foster learning and growth.
3. You can enjoy both peace of mind and convenience. At only five minutes from the valley floor (and four minutes from St. Helena Hospital), you can get here quickly and visit your child at any time. Our closed and gated campus provides physical safety, while our staff creates an emotionally safe place as well.

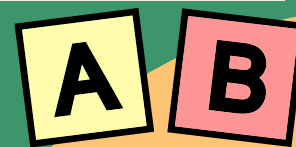


Little Sunshine Learning Center

Preschool and Infant Toddler Center

On Foothills School Campus
711 Sunnyside Rd
St. Helena, CA 94574

Contact Us Now!
☎ 707.963.3546



Nurturing Development

Because it is our mission "To increase in wisdom and stature, and in favor with God and man" Little Sunshine Learning Center on the Foothills Campus has chosen to create a child-centered preschool program. Children's growth is supported and dictates the types of activities the lead teacher uses throughout the day.

Why a preschool experience?

Research shows that a child's brain grows tremendously during the early stages of life. When busy parents are looking for activities that enrich their child's growth and provide social interaction, they may consider enrolling in a preschool program.



Registration Requirement

1.

Child Age

Birth to age 5 during the academic school year.
Up to age 7 for the summer program.

2.

School Form

Parents will fill out several forms provided by our school for registration requirements.



Love of Nature

Our campus has a garden, a natural play area, and animals.

Fieldtrips

Enriching fieldtrips are held regularly through the school year for the preschool children at our center.

