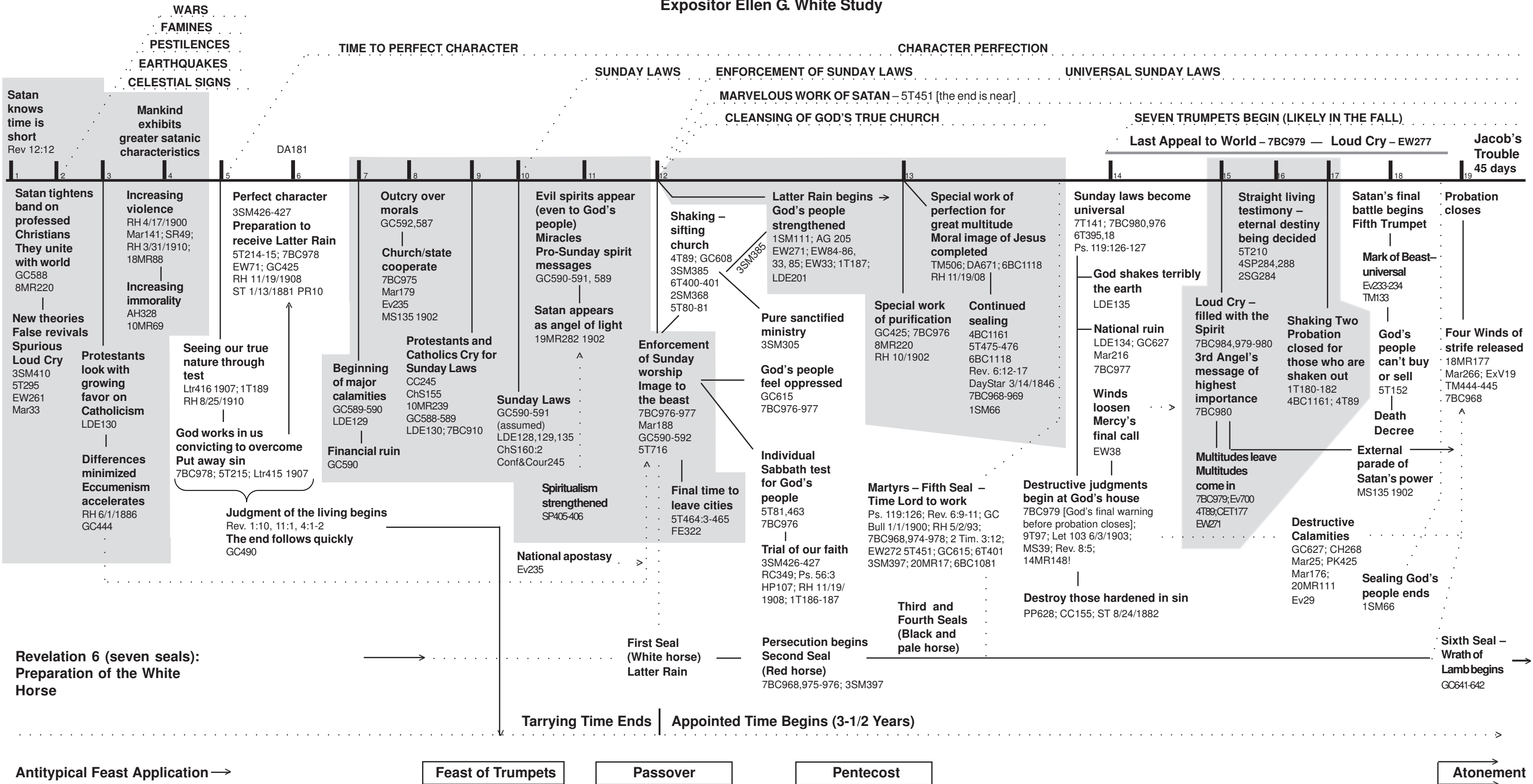


“Let us show the people where we are in prophetic history . . .” *Testimonies*, vol. 5, p. 716.  
 “He has a chart pointing out every waymark on the heavenward journey, and he ought not to guess at anything.” *The Great Controversy*, p.598.

# SEQUENCE OF EARTH’S FINAL EVENTS

Expositor Ellen G. White Study



Matthew 24 (Luke 21, Mark 13) → [covers this time period]  
 Daniel 8-12 → [covers this time period]