

IMPORTANT NOTICE – PLEASE READ IMMEDIATELY

VILLAGE OF EAU CLAIRE NEEDS YOUR HELP!

HOW TO IDENTIFY A LEAD SERVICE LINE IN YOUR HOME.

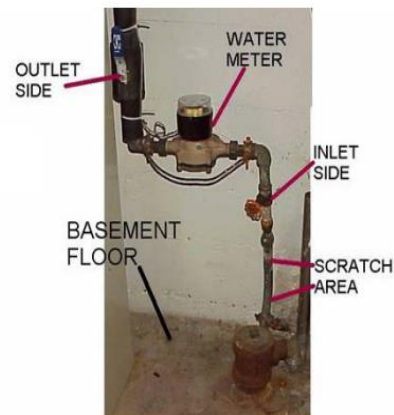
The Village of Eau Claire needs your help in identifying the type of water service lines in the Village's distribution system that services your home and/ or business. There are generally 3 types of water service lines to your home. Galvanized Steel, Lead, Copper. In newer homes, there may be PVC or plastic water lines which do not pose a problem. Services that contain Lead materials pose a potential health risk. The Village of Eau Claire's Water Department is currently undergoing a survey for each home and/or business that may have a lead service line.

To help confirm the type of service to your home, there are 6 simple steps below which will help you determine the type of piping. Helpful tools are a **house key, a penny, screwdriver and a magnet**.

Steps to Identify Types of Water Service Lines:

1. Find the water meter on your property. This could be in a basement, crawl space or on the ground level floor for slab homes.
2. Look for the pipe that comes through the basement wall or floor or crawl space.
3. Use a penny to gently scratch the pipe. Make sure the pipe is clean of debris or paint.
4. Place magnet on the pipe to see if it sticks to the pipe.
5. Determine the pipe material and email the results to eauclaireclerk@gmail.com.
6. Use instructions below and on back of page to assist with determining your type of plumbing in the home.

How to Identify Lead Service Line



**Lead Service Line – Typical solder “bulb”
Characteristic at the plumbing connection
“TEST AREA”**

IMPORTANT NOTICE – PLEASE READ IMMEDIATELY

Now that you identified the test area, test the service line to determine the type of pipe material.



LEAD PIPE – IF THE SCRAPED AREA IS SHINY & SILVER, YOUR SERVICE LINE IS LEAD. A MAGNET WILL NOT STICK TO LEAD PIPE.



COPPER PIPE – IF THE SCRATCHED AREA IS COPPER IN COLOR, LIKE A PENNY, YOUR SERVICE LINE IS COPPER. A MAGNET WILL NOT STICK TO A COPPER PIPE.



GALVANIZE STEEL PIPE – IF THE AREA SCRAPED REMAINS DULL GRAY, AND A MAGNET STICKS TO THE SURFACE, YOUR SERVICE LINE IS GALVANIZED STEEL.

Please email or call with your results to help the Village identify service lines that must be replaced.

Thank you for your cooperation in helping to keep our drinking water safe!

IF YOU ARE UNABLE TO PREFORM THIS TEST, PLEASE CONTACT OUR OFFICE

(269) 461-6173